

Is Your Product Registered?

Contact your Dealer to verify.

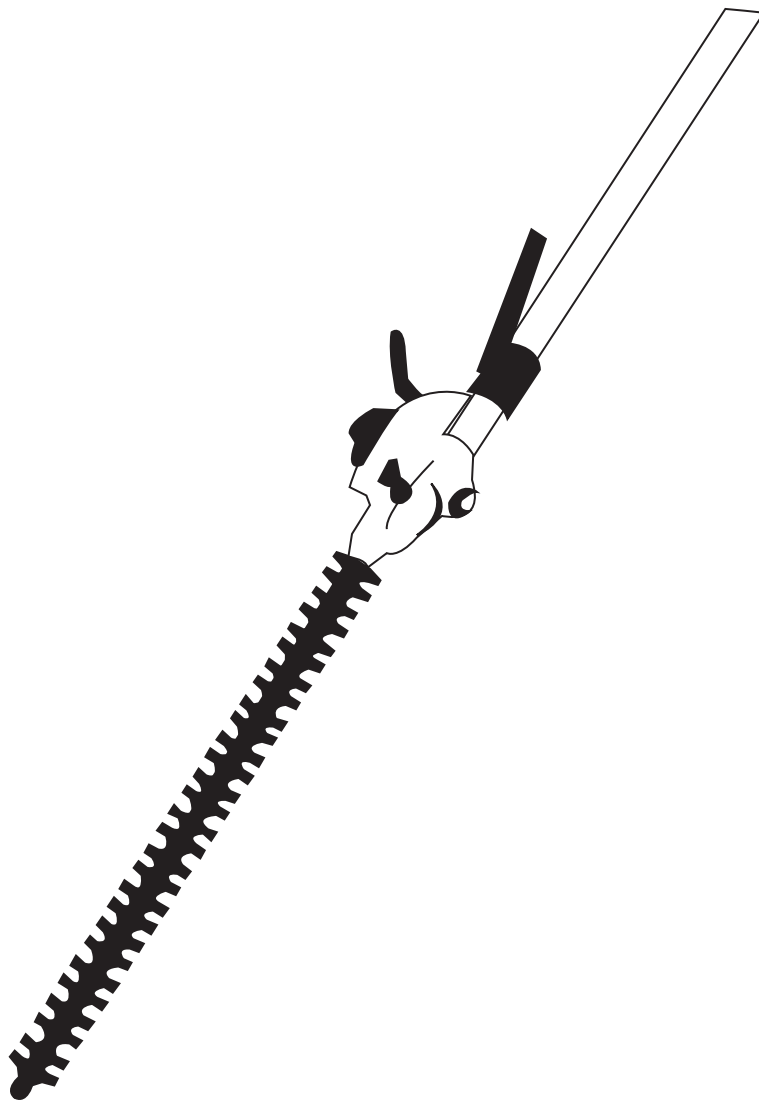
Warranties are based on Registrations and reduced to 1 year without
Registration.

MARUYAMA

ILLUSTRATED PARTS LIST

MC-HTSL

MULTICUTTER ATTACHMENT
HEDGE TRIMMER

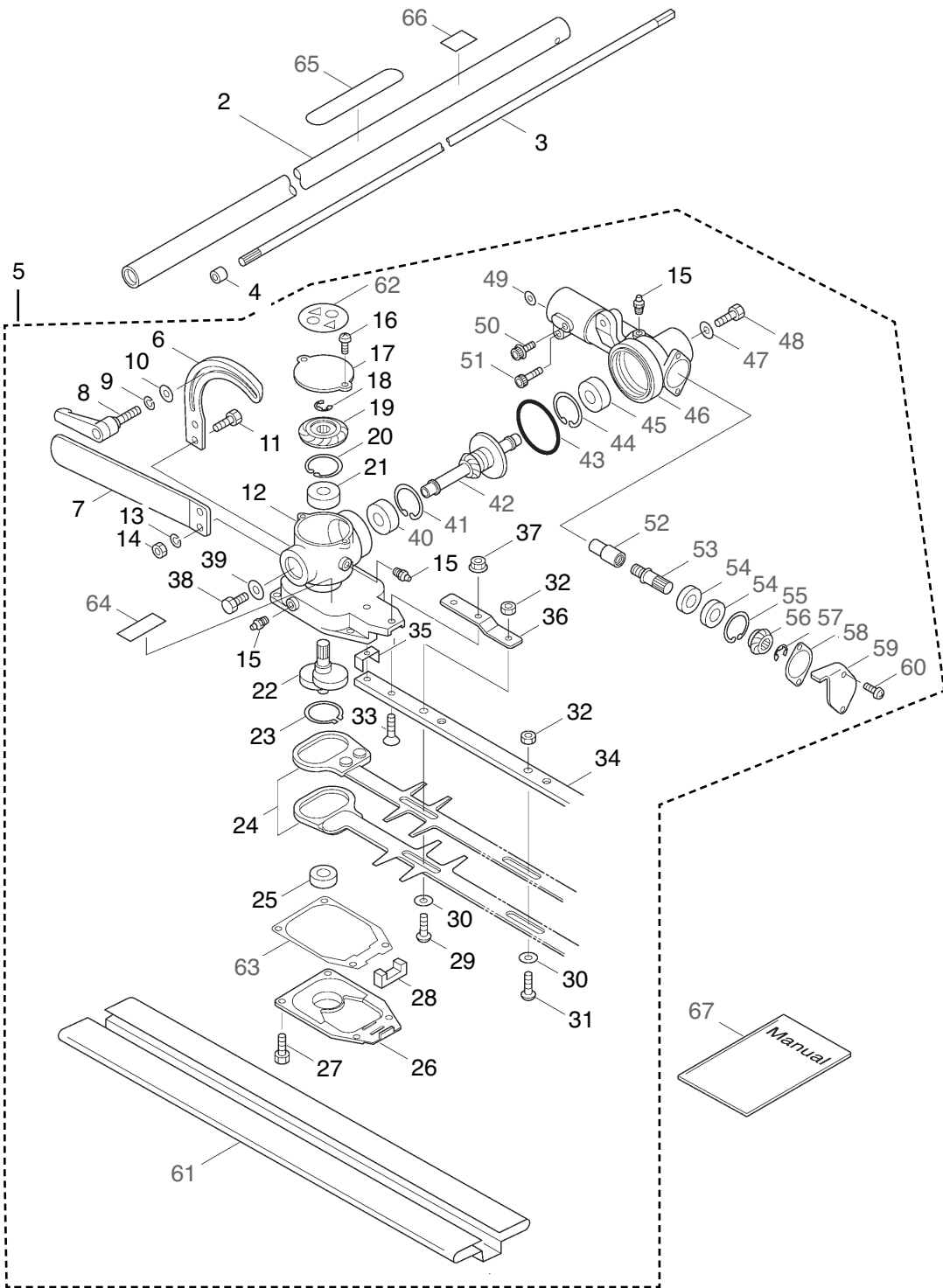


MC-HTSL
HEDGE TRIMMER
ATTACHMENT
PART 845470-REV06/06



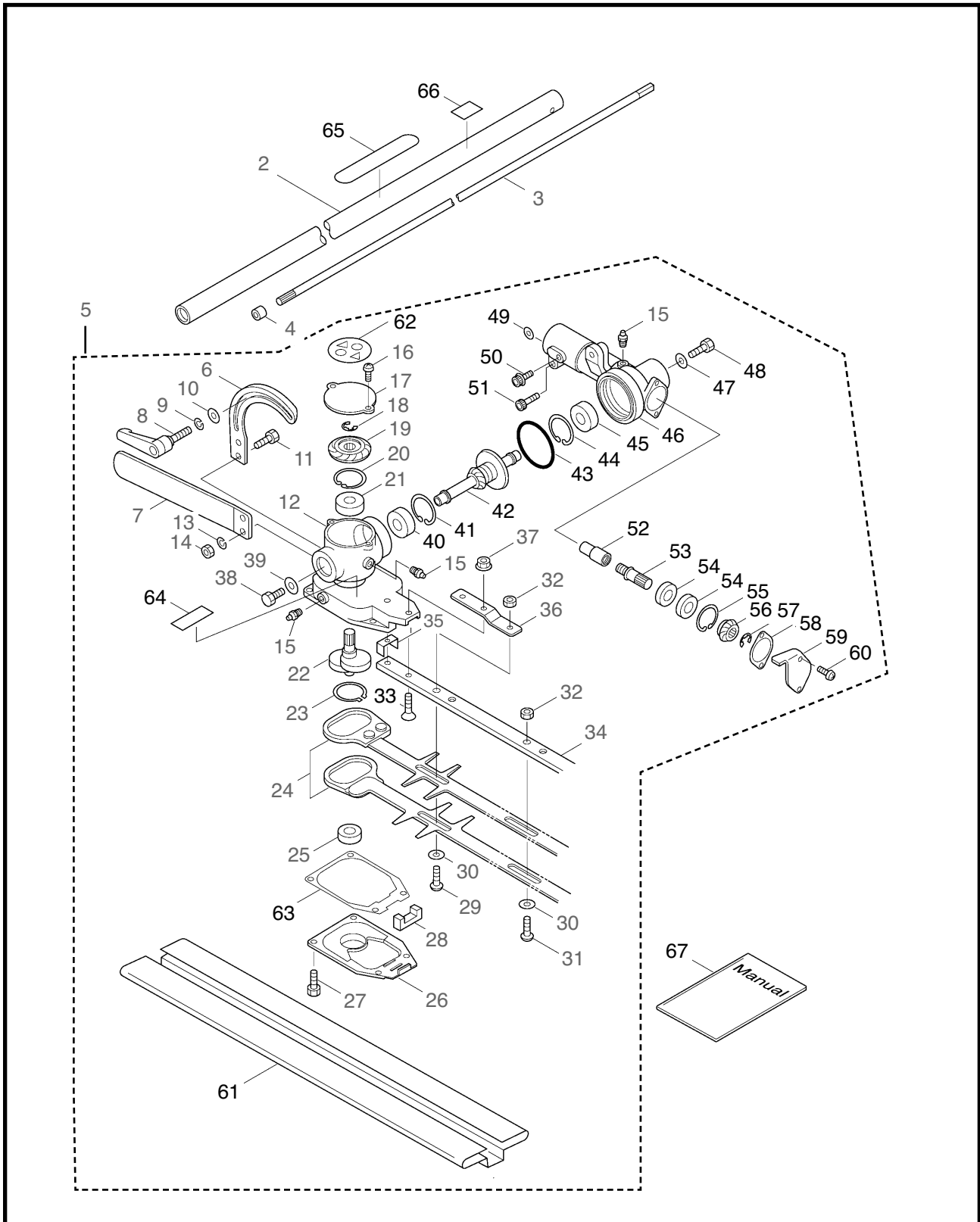
Maruyama. *E x t r a o r d i n a r y .*

MC-HTSL



REF #	PART #	DESCRIPTION	Q'TY.	NOTES
1	363142	MC-HTSL	1	MUS
2	224065	Driveshaft Tube	1	
3	216090	Driveshaft	1	749L
4	216079	Stopper	1	
5	227257	Blade Ass'y (24)	1	Includes 6-64
6	223873	Stay	1	
7	223872	Handle	1	
8	631748	Clamp Lever	1	6x25
9	631749	Spring Washer	1	M6
10	631750	Washer	1	6x15xt2
11	631751	Screw	2	M6x22
12	634568	Casing (A)	1	
13	631749	Spring Washer	2	M6
14	582438	Nut	2	M6
15	991937	Grease Nipple	3	M6
16	631753	Screw	2	M4x8
17	631754	Plate (A)	1	
18	631755	Snap Ring	1	ETW6
19	631756	Gear	1	R2
20	631757	Snap Ring	1	RTW26
21	014490	Bearing	1	#6000 2RS
22	631758	Crank Complete	1	
23	631759	Snap Ring	1	STW28
24	638463	Blade Ass'y	2	
25	638464	Bearing	1	#608Z
26	634570	Cover	1	
27	634572	Screw	4	M4x12
28	631763	Felt	1	
29	631764	Screw	1	L29
30	991913	Washer	6	
31	631765	Screw	5	L17
32	290560	U-Nut	6	M6
33	631766	Screw	2	M5x20
34	638465	Guide Plate	1	600L
35	631768	Stopper	1	
36	631769	Reinforcing Plate	1	
37	103549	Flange Nut	2	M5
38	631770	Screw	1	M6x12
39	631750	Washer	1	6x15xt2

MC-HTSL



REF #	PART #	DESCRIPTION	Q'TY.	NOTES
40	631771	Bearing	1	#608 2RS
41	631772	Snap Ring	1	RTW22
42	631773	Gear Shaft (A)	1	
43	631774	O-Ring	1	P41
44	631757	Snap Ring	1	RTW26
45	014490	Bearing	1	#6000 2RS
46	634569	Casing (B)	1	
47	631750	Washer	1	6x15xt2
48	631770	Screw	1	M6x12
49	631776	Washer	1	5x10xt1
50	631777	Cap Screw	1	M5x12
51	631778	Cap Screw	1	M5x25
52	631779	Coupler	1	
53	631780	Gear Shaft (B)	1	
54	631781	Bearing	2	#6900RS
55	631772	Snap Ring	1	RTW22
56	631782	Gear	1	L2
57	631755	Snap Ring	1	ETW6
58	631783	Packing	1	
59	643721	Plate 135	1	
60	643722	Screw	2	M4x10
61	638466	Blade Cover	1	650L
62	631786	Seal	1	
63	634571	Packing	1	
64	223925	Label	1	Grease up
65	221501	Label	1	Warning
66	217879	Label	1	Warning
67	223874	Instruction Manual	1	MC-HTS(MUS)



Maruyama U.S., Inc.

Post Office Box 2107

Denton, TX 76202

940-383-7400 voice

940-383-7466 fax

www.maruyama-us.com