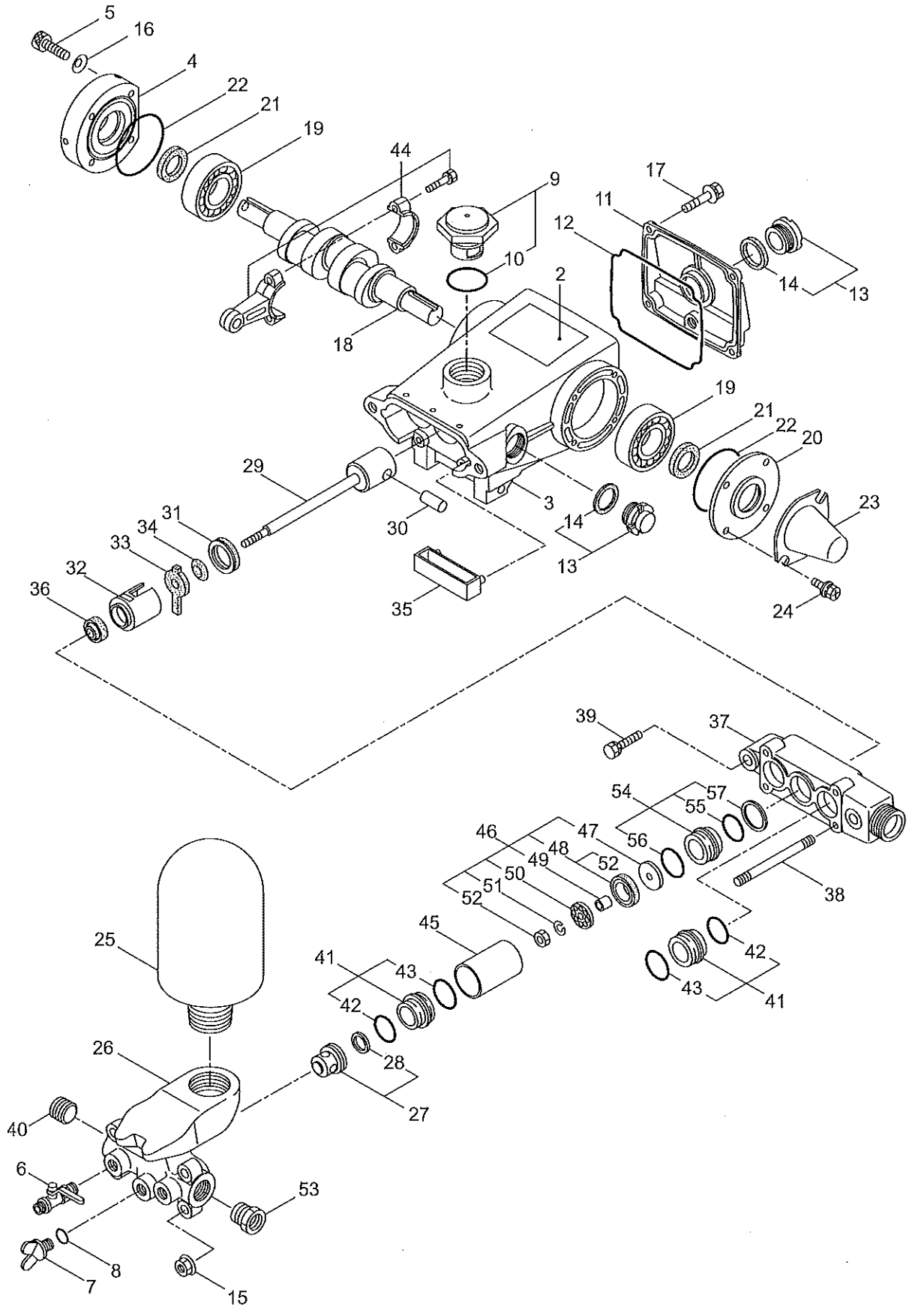


40. BSA-500-1.8
 POWER SPRAYER-1 (MS625S)



Ref. No.	Parts No.	Parts Name	Q'ty	Remarks
40-1	818483	MS625S	1	
40-2	130657	Label	1	MS625S
40-3	130637	Crankcase	1	
40-4	121415	Oil Seal Case	1	
40-5	087822	Cap Screw	4	M6X18
40-6	117609	Cock Ass'y	1	G1/4XR1/4
40-7	108366	Plug	1	G1/4
40-8	023170	O-Ring	1	P12.5
40-9	091264	Oil Filler Cap Ass'y	1	Incl.10
40-10	014177	O-Ring	1	P35
40-11	130444	Rear Cover	1	
40-12	048773	O-Ring	1	119X96X2.0
40-13	092241	Oil Gauge Ass'y	2	Incl.14
40-14	044428	Packing	2	25X34XT2
40-15	126201	Nut	4	M8
40-16	161619	Disc Spring	4	#6
40-17	125824	Bolt	4	M6X16(SMK)
40-18	044273	Crankshaft	1	
40-19	014480	Bearing	2	#6305
40-20	130468	Oil Seal Case	1	
40-21	043222	Oil Seal	2	D25356
40-22	043343	O-Ring	2	61.8X1.8
40-23	109692	Shaft Protector	1	
40-24	125824	Bolt	4	M6X16(SMK)
40-25	130548	Air Chamber	1	
40-26	121411	Discharge Manifold	1	
40-27	121218	Valve Ass'y	3	Incl.28
40-28	043793	Packing	3	25.8X28.5X1.1
40-29	120948	Piston Rod	3	
40-30	043351	Piston Pin	3	11X28.5
40-31	044285	Oil Seal	3	10.5 34 7
40-32	043530	Seal Retainer	3	
40-33	043532	Oil Wick	3	
40-34	026853	Packing	3	
40-35	043355	Oil Pan	1	
40-36	100015	Seal	3	
40-37	107610	Inlet Manifold	1	
40-38	130493	Stud Bolt	4	M8X117X11X18
40-39	128353	Bolt	2	M10X50X26
40-40	130470	Plug	1	R3/4
40-41	130538	Adapter Ass'y	5	Incl.42,43
40-42	043781	O-Ring	5	24.2X2.3
40-43	027536	O-Ring	5	27.2X2.65
40-44	048737	Connecting Rod Ass'y	3	
40-45	107992	Cylinder Pipe	3	32X35.5X56

Ref. No.	Parts No.	Parts Name	Q'ty	Remarks
40-46	634031	Inlet Valve Ass'y	3	Incl.47-52
40-47	027944	Inlet Valve Seat	3	7X28XT3.8
40-48	632587	Piston Packing	3	Incl.52
40-49	027796	Spacer	3	7X10X11.5
40-50	027947	Piston Retainer	3	7X26X3
40-51	015850	Spring Washer	3	M7
40-52	115598	Nut	3	M7
40-53	293996	Bushing	1	1/2X3/4
40-54	130540	Adapter Ass'y	1	Incl.55-57 Only Center
40-55	043781	O-Ring	1	24.2X2.3
40-56	027536	O-Ring	1	27.2X2.65
40-57	011261	Packing	1	28.5X32XT0.5